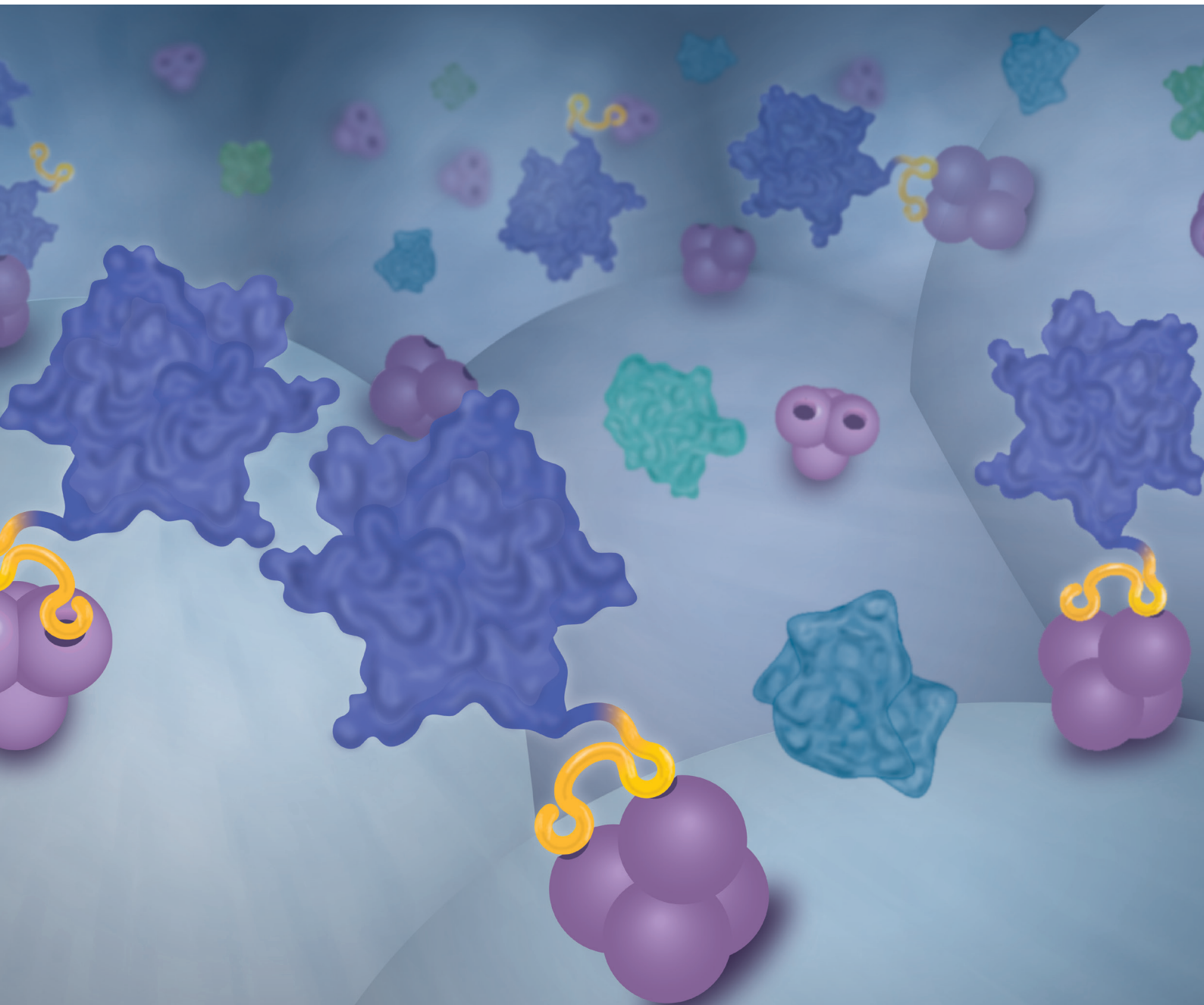


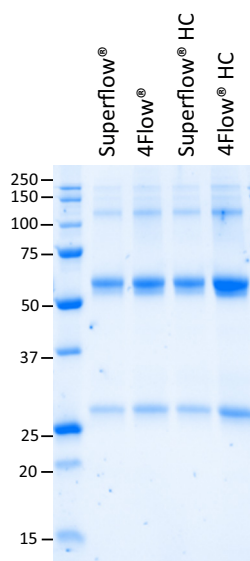
STREP-TACTIN®XT 4FLOW®

Efficient purification of large proteins



Key benefits:

- Higher affinity and protein yield even for large proteins
- Higher capacity for large proteins
- Broad pH stability (pH 4-10)
- Higher pressure stability compared to Strep-Tactin® Sepharose
- Cost efficient



Both Strep-Tactin®XT Superflow/high capacity (HC) and Strep-Tactin®XT 4Flow®/ high capacity (HC) achieved for large monoclonal antibody tagged with the Twin-Strep-tag® (mAB-TST) the same high purity, but the latter the highest yield.

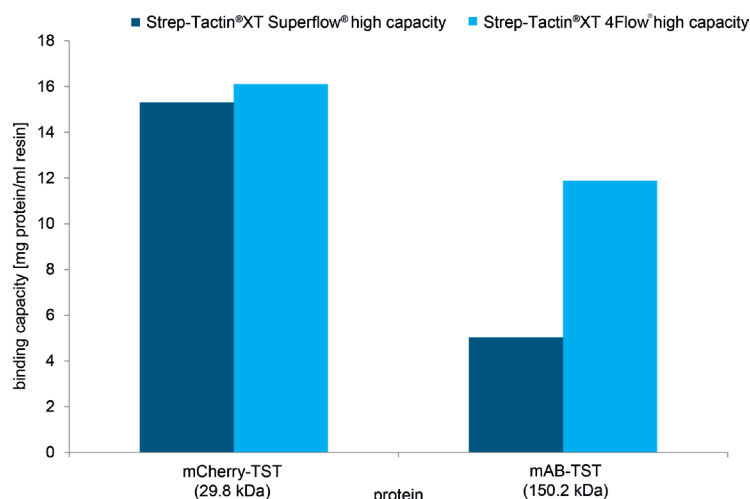
Strep-Tactin®XT 4Flow® Starter Kit:

- 1 ml Strep-Tactin®XT 4Flow® gravity flow column
- 1 x Buffer W
- 1 x Buffer BXT
- 1 x Buffer XT-R
- Strep-Tactin® conjugated with HRP for Western Blot detection
- Short protocol

STREP-TACTIN®XT 4FLOW®

High affinity meets high capacity

Efficient purification of large proteins can be challenging. If the agarose has a high concentration and is tightly cross-linked, the more difficult it is for large proteins to enter the agarose. As a result, large target proteins are insufficiently immobilized and remain in the flow-through. The solution to this problem is a highly specific Strep-Tactin®XT combined with a low concentrated and cross-linked agarose, Strep-Tactin®XT 4Flow®.



Strep-Tactin®XT 4Flow® high capacity in comparison to Strep-Tactin®XT Superflow® high capacity provides an equal binding capacity for the regular size mCherry-TST, but a 2.5 fold higher binding capacity for the large mAB-TST protein.

Strep-Tactin®XT 4Flow® products

Format	Size	Cat. no.	
		Classic capacity	High capacity
Strep-Tactin®XT 4Flow® 50% suspension	4 ml	2-5010-002	2-5030-002
	20 ml	2-5010-010	2-5030-010
	50 ml	2-5010-025	2-5030-025
Strep-Tactin®XT 4Flow® gravity flow columns	5x 0.2 ml	2-5011-005	2-5031-005
	1 ml	2-5012-001	2-5032-001
	5 ml	2-5013-001	2-5033-001
	10 ml	2-5014-001	2-5034-001
Strep-Tactin®XT 4Flow® cartridges	1 ml	2-5021-001	2-5025-001
	5 ml	2-5022-001	2-5026-001
Strep-Tactin®XT 4Flow® Starter Kit	2-5998-000		