

Chemotactic factors (CF) Antibodies of Cloud-Clone

Chemotactic factors (CF) control the migration of cells between tissues and the positioning and interactions of cells within tissue. They mediate the host response to cancer by directing the trafficking of leukocytes into the tumor microenvironment. They also play important roles in the biology of nonimmune cells important for tumor growth and progression. Chemotactic factors can directly modulate the growth of tumors by inducing the proliferation of cancer cells and preventing their apoptosis, direct tumor cell movement required for metastasis and modulate tumor growth through their effects on tumor stromal cells.

High Sensitivity

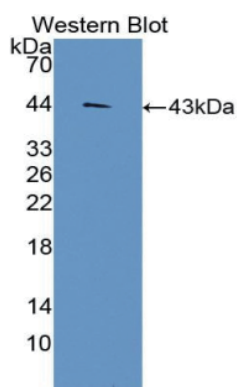


Figure. Western Blot;
Sample: Recombinant
CCL3L1, Human.

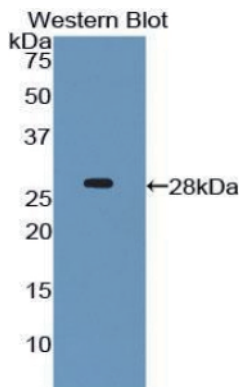


Figure. Western Blot;
Sample: Recombinant
CX3CL1, Human.

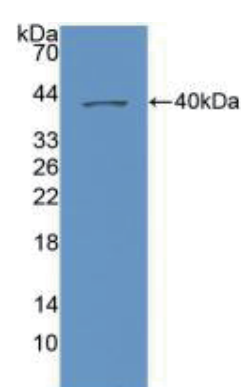


Figure. Western Blot;
Sample: Recombinant
CXCL1, Human.

High Specificity

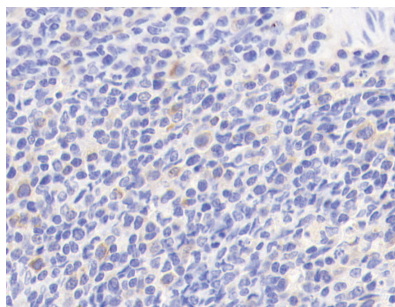


Figure. DAB staining on IHC-P;
Samples: Human Liver Tissue. (CCL3L1)

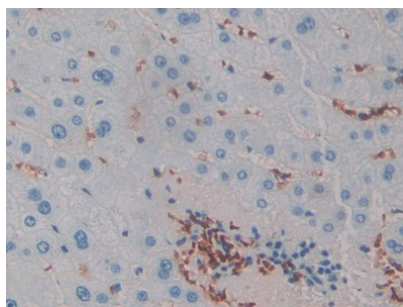
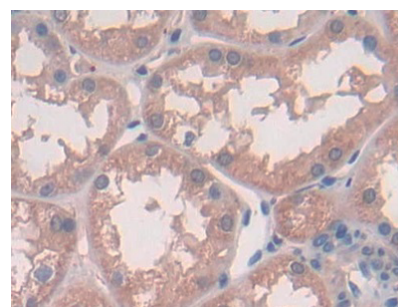


Figure. DDAB staining on IHC-P;
Samples: Human Stomach.(CX3CL1)



DAB staining on IHC-P; Samples:
Human Cerebrum Tissue. (CXCL1)

CF Antibodies of Cloud-Clone :

Targets	Core No.	Species	Applications
ECF	A025	human, mouse, rat, monkey, horse, bovine, pig	WB; IHC; ICC; IP.
CCL3L1	A026	human, mouse, rat	WB; IHC; ICC; IP.
CX3CL1	A040	human, mouse, rat	WB; IHC; ICC; IF; IP.
CXCL1	A041	human, mouse, rat	WB; IHC; ICC; IF; IP.
MDC	A091	human, mouse, rat, bovine, dog	WB; IHC; ICC; IP.
CXCL7	A370	human, mouse, rat, pig	WB; IHC; ICC; IF; IP.
CXCR3	A625	human, mouse, rat	WB; IHC; ICC; IP.
CXCL16	A771	human, mouse, rat	WB; IHC; ICC; IP.
CCR3	A910	human	WB; IHC; ICC; IP.
CCR2	A914	human	WB; IHC; ICC; IP.
CXCR6	A918	human	WB; IHC; ICC; IP.
CXCR5	A923	human	WB; IHC; ICC; IP.
CXCR4	A940	human, mouse, pig	WB; IHC; ICC; IP.; Flow cytometry.
CCL14	B122	human	WB; IHC; ICC; IP.
TECK	B248	human	WB; IHC; ICC; IP.
CXCR7	B488	human	WB; IHC; ICC; IP.
PARC	B522	human	WB; IHC; ICC; IP.
CX3CR1	B523	human, mouse	WB; IHC; ICC; IP.
TARC	B571	human, mouse, rat	WB; IHC; ICC; IP.
SLC	B575	human, mouse, rat	WB; IHC; ICC; IP.
BLC1	B601	human, mouse, rat	WB; IHC; ICC; IP.
CXCL2	B603	human, mouse, rat, horse	WB; IHC; ICC; IP.
CXCL3	B604	human, rat, horse	WB; IHC; ICC; IF; IP.
CXCL14	B607	human, mouse, rat	WB; IHC; ICC; IP.
CCR7	B647	human, mouse	WB; IHC; ICC; IP.
CCL27	B651	human	WB; IHC; ICC; IF; IP.
CCR6	C014	human	WB; IHC; ICC; IP.
VCC1	C068	human, mouse, rat	WB; IHC; ICC; IP.
XCL2	C070	human	WB; IHC; ICC; IP.
LECT1	C563	human, mouse	WB; IHC; ICC; IP.
LECT2	F541	human, mouse, rat	WB; IHC; ICC; IP.
CCL16	B126	human	WB; IHC; ICC; IP.
CXCL15	C069	human, mouse	WB; IHC; ICC; IP.

(More information, please visit: www.cloud-clone.com)

Antibodies can be used to construct “Cloud-Clone”



CLOUD-CLONE CORP. (CCC, USA), a research and experimental development in molecular biology and immunology oriented company headquartered in Houston, is the owner of the trade mark “Cloud-Clone”. Its main business includes production of assay reagent, manufacture of analysis equipment and service for animal experiment.

Cloud-Clone Corp.

Original Manufacturer for Protein, Antibody, Assay kit and CRO service.

23603 W. Fernhurst Dr., Unit 2201, Katy, TX 77494, USA Tel: 001-832-538-0970 Toll free: 888-960-7402 (In the USA)

www.cloud-clone.com www.cloud-clone.us