



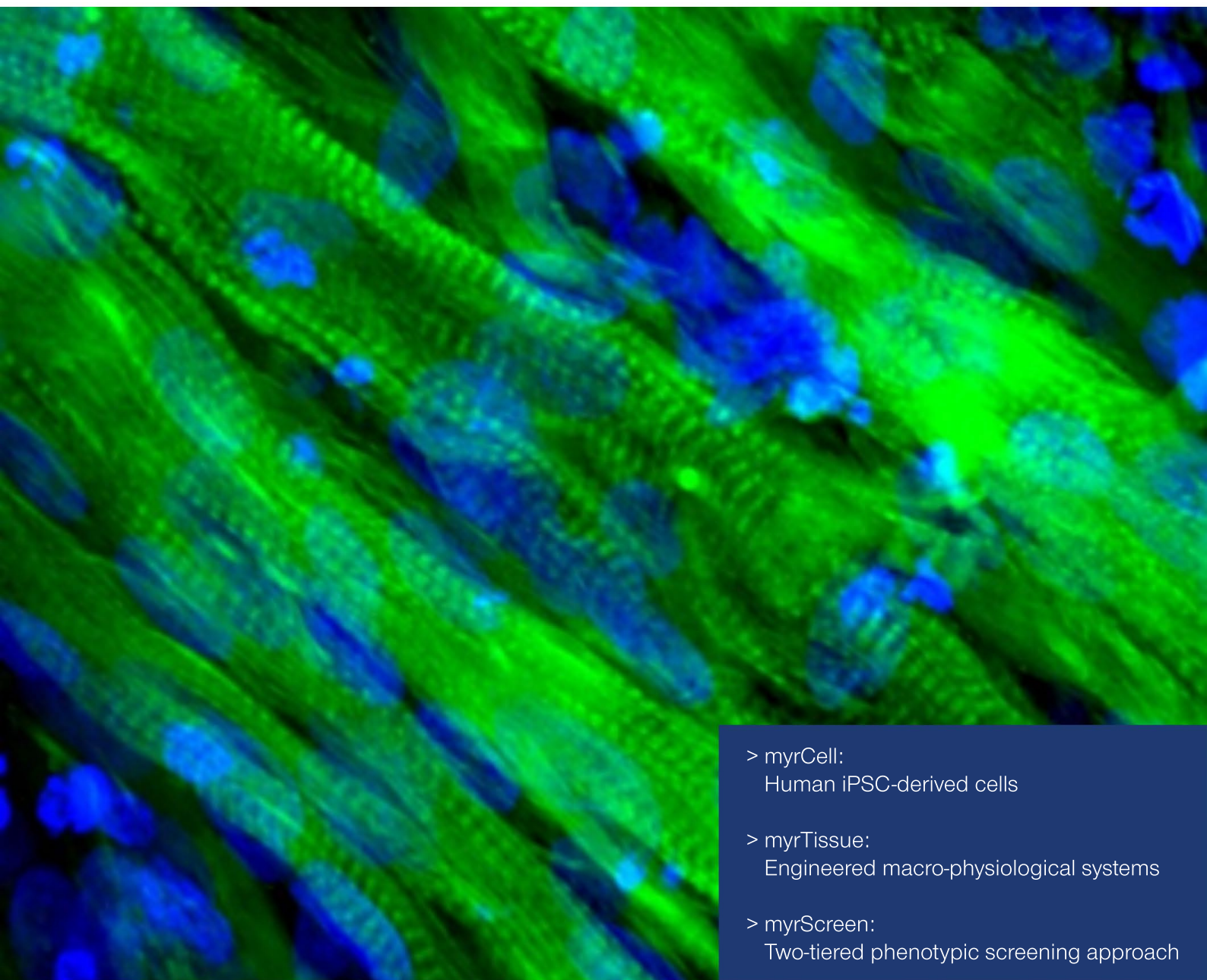
The drug development accelerator

## Skeletal muscle product portfolio:

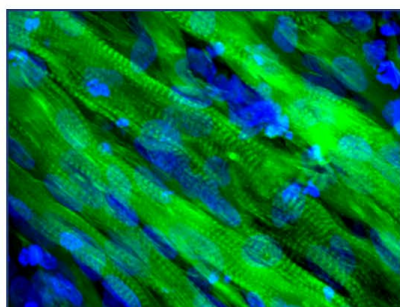
myrCell-Skeletal

myrTissue-Skeletal

myrScreen-Skeletal



- > myrCell:  
Human iPSC-derived cells
- > myrTissue:  
Engineered macro-physiological systems
- > myrScreen:  
Two-tiered phenotypic screening approach



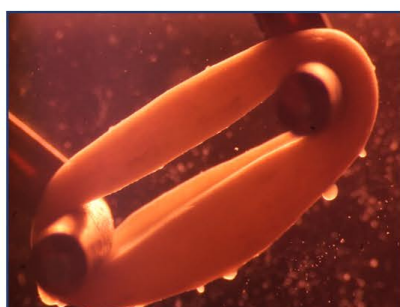
myrCell-Skeletal

### myrCell-Skeletal

Human iPSC-derived skeletal myocytes from:

- (1) healthy subjects
- (2) patients with skeletal muscle disease
- (3) isogenic controls

Cryopreserved myrCells available for shipping.



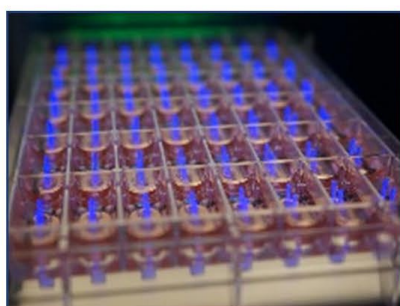
myrTissue-Skeletal

### myrTissue-Skeletal

Human iPSC-derived skeletal muscle from myrCell products to simulate:

- (1) health
- (2) disease

myrTissue provided as living, frozen or formaldehyde-fixed tissue.



myrScreen-Skeletal

### myrScreen-Skeletal

Two-tiered phenotypic screening:

- (1) Video optic screen 48-well myrPlate format
- (2) Organ bath analyses

Acute and chronic screens designed according to customer requirements.

## Key benefits at a glance

- Various cell & tissue models available on demand
- Disease models and controls
- Deep phenotyping of organotypic properties
- Drug development in a human-centric approach