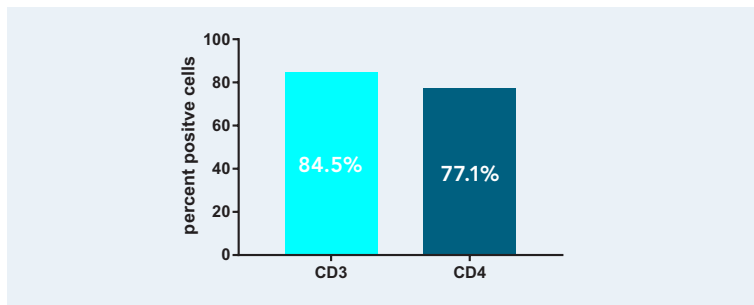


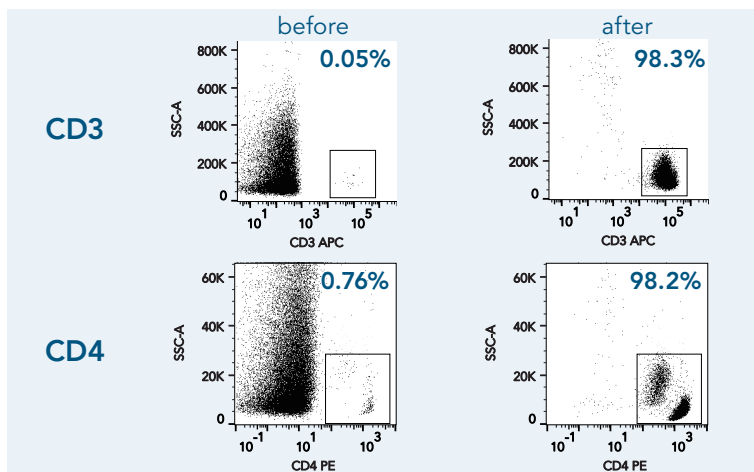
YIELD - for an efficient workflow



Get high yields

CD3⁺ and CD4⁺ cells were enriched using the Fab-TACS[®] Gravity Isolation Kit. The bar chart indicates the yield as mean values of isolated target cells from five independent samples in total. Fab-TACS[®] enables high yields in a highly reproducible manner.

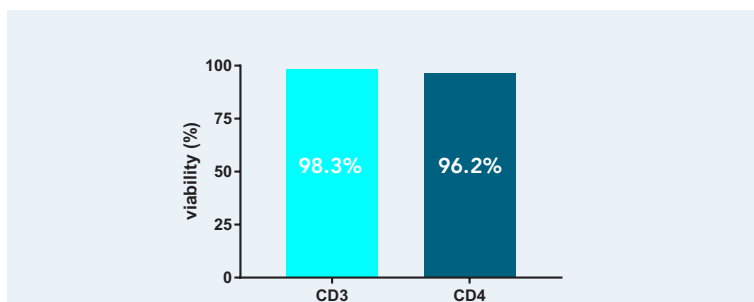
PURITY - for reliable results



Get pure cells

Isolation of CD3⁺ and CD4⁺ cells directly from whole blood. Panels on the left side show samples before isolation, panels on the right after Fab-TACS[®] isolation. Cells were stained either with CD3-APC (OKT-3) or CD4-PE (OKT-4) and analyzed by flow cytometry. Dead cells were excluded from analysis using DAPI staining. Doublet and debris discrimination were performed using different FSC/SSC signals. Fab-TACS[®] ensures highest purity independent of the starting material.

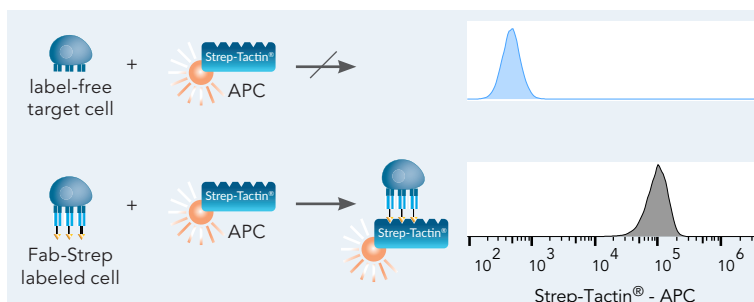
VIABILITY - for downstream experiments



Get viable cells

Viability of isolated cells is shown mean value of five independent samples in total. Fab-TACS[®] ensures highly viable and immuno-competent cells for all upcoming downstream applications.

REVERSIBILITY - for authentic cells



Get label-free cells

APC-Fluorescence after Fab-TACS[®] Gravity CD3 isolation with CD3-FITC and Strep-Tactin[®]-APC. The target cells do not bind the staining reagent since all isolation reagents dissociated from the cell. On the contrary, labeled cells bind the dye resulting in a fluorescence shift. Fab-TACS[®] ensures authentic target cells.



PRODUCT OVERVIEW

Cat. no.	Product description
6-6299-002	Fab-TACS® Gravity Introductory Kit 2x Fab-TACS® Gravity column, Fab-Strep of your choice, Buffer CI (10x), Biotin Elution Buffer, capacity: 30 ml whole blood
6-6201-004	CD3 Fab-TACS® Gravity Isolation Kit (4x) 4x Fab-TACS® Gravity column, CD3 Fab-Strep, Buffer CI (10x), Biotin Elution Buffer, 1x Fab-TACS® Gravity Adapter, capacity: 60 ml whole blood
6-6201-010	CD3 Fab-TACS® Gravity Isolation Kit (10x) 10x Fab-TACS® Gravity column, CD3 Fab-Strep, Buffer CI (10x), Biotin Elution Buffer, 2x Fab-TACS® Gravity Adapter, capacity: 150 ml whole blood
6-6202-004	CD4 Fab-TACS® Gravity Isolation Kit (4x) 4x Fab-TACS® Gravity column, CD4 Fab-Strep, Buffer CI (10x), Biotin Elution Buffer, 1x Fab-TACS® Gravity Adapter, capacity: 60 ml whole blood
6-6202-010	CD4 Fab-TACS® Gravity Isolation Kit (10x) 10x Fab-TACS® Gravity column, CD4 Fab-Strep, Buffer CI (10x), Biotin Elution Buffer, 2x Fab-TACS® Gravity Adapter, capacity: 150 ml whole blood
6-6203-004	CD8 Fab-TACS® Gravity Isolation Kit (4x) 4x Fab-TACS® Gravity column, CD8 Fab-Strep, Buffer CI (10x), Biotin Elution Buffer, 1x Fab-TACS® Gravity Adapter, capacity: 200 ml whole blood
6-6203-010	CD8 Fab-TACS® Gravity Isolation Kit (10x) 10x Fab-TACS® Gravity column, CD8 Fab-Strep, Buffer CI (10x), Biotin Elution Buffer, 2x Fab-TACS® Gravity Adapter, capacity: 500 ml whole blood
6-6331-001	Fab-TACS® Gravity Adapter Enables the fitting of Fab-TACS® Gravity columns in standard 50 ml tubes.

STREPTAMERS® FOR T CELL EXPANSION

The *in vitro* generation of a large number of functional T cells is important for basic research. The Streptamers® for T cell expansion are novel reagents for polyclonal expansion of T cells. They are soluble protein complexes generated by multimerization of anti-CD3 and anti-CD28 Fab-Streps with a Strep-Tactin® multimer.

- › completely reversible reagents
- › detachment from the cells at any given time point
- › full control about your expansion experiment
- › adjustable CD3 : CD28 ratio
- › non-magnetic

Cat. no.	Product description
6-8900-000	Streptamer® CD3/CD28 Kit for T cell expansion