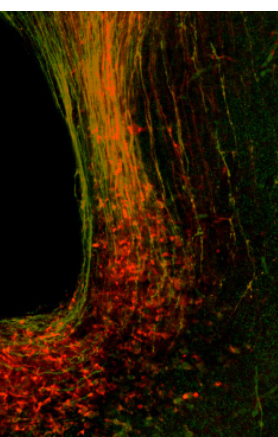
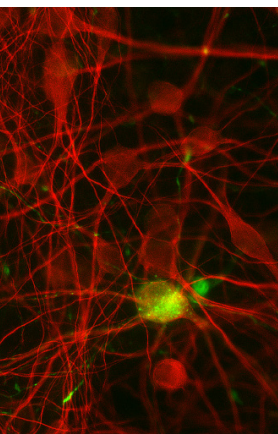


ELISA KITS

REF#	PRODUCT NAME	SAMPLE & VOLUME	SENSITIVITY	IVD/ RUO	APPLICATIONS
BA E-1900	5HIAA ELISA Urine	50µL urine	0.17mg/L	IVD	Neurobiology Carcinoid tumors
BA E-5100	Adrenaline Research ELISA	1-750µL, all biological fluids	3.3pg/mL (depending on sample volume)	RUO	Neurobiology Metabolism
BA E-5200	Noradrenaline Research ELISA	1-750µL, all biological fluids	1.3pg/mL (depending on sample volume)	RUO	Neurobiology Metabolism
BA E-6200	Noradrenaline ELISA Urine & Plasma	10µL urine, 300µL plasma	1.5ng/mL urine, 50pg/mL plasma	IVD	Neuroendocrine tumors Heart disease
BA E-5400	2-CAT (Adrenaline - Noradrenaline) Research ELISA	1-750µL, all biological fluids	Adrenaline: 6.6pg/mL Noradrenaline: 2.6pg/mL (depending on sample volume)	RUO	Neurobiology Metabolism
BA E-5500	2-CAT (Noradrenaline - Dopamine) Research ELISA	1-750µL, all biological fluids	Noradrenaline: 2.6pg/mL Dopamine: 6.6pg/mL (depending on sample volume)	RUO	Neurobiology Metabolism
BA E-5600	3-CAT Research ELISA (Adrenaline - Noradrenaline - Dopamine)	1-750µL, all biological fluids	Adrenaline: 6.6pg/mL Noradrenaline: 2.6pg/mL Dopamine: 6.6pg/mL (depending on sample volume)	RUO	Neurobiology Metabolism
BA E-6600	3-CAT ELISA Plasma & Urine (Adrenaline - Noradrenaline - Dopamine)	10µL urine, 300µL plasma	Adrenaline: 0.3pg/mL urine, 10pg/mL plasma / Noradrenaline: 1.5pg/mL urine, 40pg/mL plasma / Dopamine: 4.5pg/mL urine, 25pg/mL plasma	IVD	Neuroendocrine tumors Heart disease
BA E-5300	Dopamine Research ELISA	1-750µL, all biological fluids	3.3pg/mL (depending on sample volume)	RUO	Neurobiology Metabolism
BA E-6300	Dopamine ELISA Urine & Plasma	10µL urine, 300µL plasma	4.5ng/mL urine, 25pg/mL plasma	IVD	Neuroendocrine tumors Heart disease
BA E-6100	Epinephrine ELISA Urine & Plasma	10µL urine, 300µL plasma	0.3ng/mL urine, 10pg/mL plasma	IVD	Neuroendocrine tumors Heart disease
BA E-6500	Epinephrine - Norepinephrine ELISA Urine & Plasma	10µL urine, 300µL plasma	Epinephrine: 0.3ng/mL urine, 10pg/mL plasma Norepinephrine: 1.5ng/mL urine, 50pg/mL plasma	IVD	Neuroendocrine tumors Heart disease
BA E-2500	GABA ELISA	100µL urine, 300µL serum, plasma, cell cultures and tissue homogenates	49ng/mL (urine samples)	RUO	Neurobiology Metabolism
BA E-2400	Glutamate ELISA	100µL urine, 100µL serum, plasma, other biological fluids	0.3µg/mL	RUO	Neurobiology Metabolism
BA E-2100	Glycine ELISA	20µL urine, other biological fluids	3.3µg/mL	RUO	Neurobiology Metabolism
BA E-5800	Histamine Research ELISA	10µL, all biological fluids	0.2ng/mL	RUO	Allergy Neurobiology
BA E-1700	Histamine ELISA <small>Fast Track</small>	20µL cell culture, whole blood or urine	0.2ng/mL	IVD	Allergy Neurobiology
BA E-1000	Histamine ELISA Urine & Plasma	10µL urine, 25µL plasma	0.12ng/mL urine, 0.3ng/mL plasma	IVD	Allergy Neurobiology
IS I-0200	Kynurenic Acid ELISA	50µL serum	0.53ng/mL	RUO	Neurobiology Immuno-oncology Inflammation
BA E-2200	Kynurenine ELISA	20µL serum or plasma, other biological fluids	47.5ng/mL	IVD	Neurobiology Immuno-oncology Inflammation
BA E-8100	Metanephrine ELISA Plasma	500µL plasma	17pg/mL	IVD	Neuroendocrine tumors
BA E-8400	Metanephrine ELISA Urine	25µL plasma	13ng/mL	IVD	Neuroendocrine tumors
BA E-8600	Metanephrine-Normetanephrine ELISA Urine	25µL urine	Metanephrine: 13pg/mL Normetanephrine: 23pg/mL	IVD	Neuroendocrine tumors
BA E-8300	Metanephrine-Normetanephrine ELISA (Free) Plasma	200µL plasma	Metanephrine: 17pg/mL Normetanephrine: 23pg/mL	IVD	Neuroendocrine tumors
BA E-8200	Normetanephrine ELISA Plasma	500µL plasma	17pg/mL	IVD	Neuroendocrine tumors
BA E-8500	Normetanephrine ELISA Urine	25µL plasma	13ng/mL	IVD	Neuroendocrine tumors
IS I-0100	Quinolinic acid ELISA	25µL serum, plasma	6ng/mL	RUO	Neurobiology Immuno-oncology Inflammation
BA E-5900	Serotonin Research ELISA	1-100µL, all biological fluids	6.2pg/mL (depending on sample volume)	RUO	Neurobiology Carcinoid tumors
BA E-8900	Serotonin ELISA Serum, Urine	25µL serum, urine, platelets	5ng/mL	IVD	Neurobiology Carcinoid tumors
BA E-2700	Tryptophan ELISA	20µL urine, serum, plasma, other biological fluids	1.2µg/mL	IVD	Neurobiology Immuno-oncology
ISE-2227	Kynurenine/Tryptophan ELISA pack	20µL urine, serum, plasma, other biological fluids	Kynurenine: 47.5ng/mL Tryptophan: 1.2µg/mL	IVD	Neurobiology Immuno-oncology Inflammation

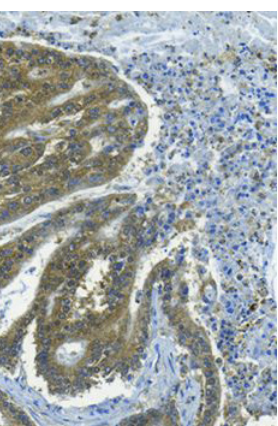
ANTIBODIES targeting Neurotransmitters

Optimized with STAINperfect immunostaining kit
(SP-A-1000)



Ref #	Target	Origin	Clonality
IS-1055	L-Arginine	Rabbit	Polyclonal
IS-1056	L-Asparagine	Rabbit	Polyclonal
IS1030	L-DOPA	Rabbit	Polyclonal
IS1005	Dopamine	Rabbit	Polyclonal
IS1006		Rabbit	Polyclonal
IS039	GABA	Mouse	Monoclonal
IS1036		Chicken	Polyclonal
IS018		Mouse	Monoclonal
IS1001	L-Glutamate	Rabbit	Polyclonal
IS1002	D-Glutamate	Rabbit	Polyclonal
IS1060	L-Glutamine	Rabbit	Polyclonal
IS1034	Glycine	Rabbit	Polyclonal
IS1039	Histamine	Rabbit	Polyclonal
IS1025	L-HomoArginine	Rabbit	Polyclonal
IS1019	3Methoxy-Tyramine	Rabbit	Polyclonal
IS1042	Noradrenaline	Rabbit	Polyclonal
IS1028	Normetanephine	Rabbit	Polyclonal
IS1033	Octopamine	Rabbit	Polyclonal
IS-1059	L-Ornithine	Rabbit	Polyclonal
IS1038	Phenylalanine	Rabbit	Polyclonal
IS1003	L-Serine	Rabbit	Polyclonal
IS1004	D-Serine	Rabbit	Polyclonal
IS1007		Rabbit	Polyclonal
IS040	Serotonin	Mouse	Monoclonal
IS1035		Goat	Polyclonal
IS011	L-Tryptophan	Mouse	Monoclonal
IS1037	Tyrosine	Rabbit	Polyclonal

ANTIBODIES targeting Tryptophan metabolism



Ref #	Target	Origin	Clonality
IS001	3-HydroxyAnthranilic Acid	Mouse	Monoclonal
IS1008		Rabbit	Polyclonal
IS013	Anthranilic Acid	Mouse	Monoclonal
IS005	Cinnabaric Acid	Mouse	Monoclonal
IS010		Mouse	Monoclonal
IS1011	Kynurenic Acid	Rabbit	Polyclonal
IS003		Mouse	Monoclonal
IS1012	L-Kynurenine	Rabbit	Polyclonal
IS004	Quinaldic Acid	Mouse	Monoclonal
IS002		Mouse	Monoclonal
IS1010	Quinolinic Acid	Rabbit	Polyclonal
IS011	L-Tryptophan	Mouse	Monoclonal
IS009		Mouse	Monoclonal
IS1014	Xanthurenic Acid	Rabbit	Polyclonal